

## Auction Preview: Theriault's to Sell LEGO Foundation Museum • May 19-21

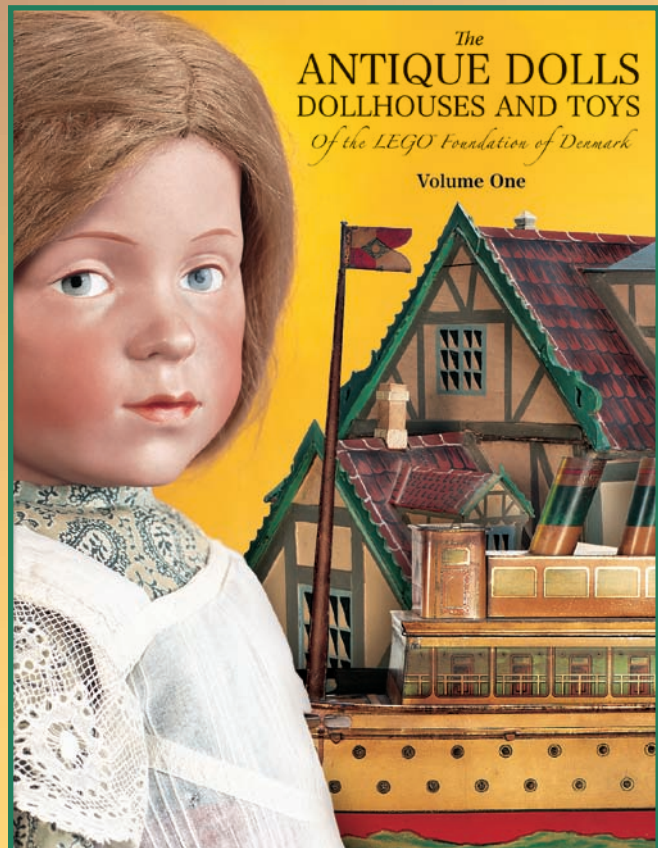
While cruising the North Sea last summer Fran and Chuck Ciralo, San Diego doll collectors, had a free afternoon when their ship docked in Copenhagen. But did they tour that beautiful city? No, they did what thousands of other American doll collectors have done for the past forty years. They grabbed the next train and headed east for the 3-hour rail ride to the tiny Danish town of Billund, home of the Legoland Museum, one of Europe's most illustrious antique doll, dollhouse and toy museums.

But when they arrived, they found to their dismay that the Museum was closed. Not just for the day, but forever. Deeply disappointed, they boarded the train and headed back to Copenhagen. Now, they feared, they would never have a chance to see the rare dolls for which the Museum was famous.

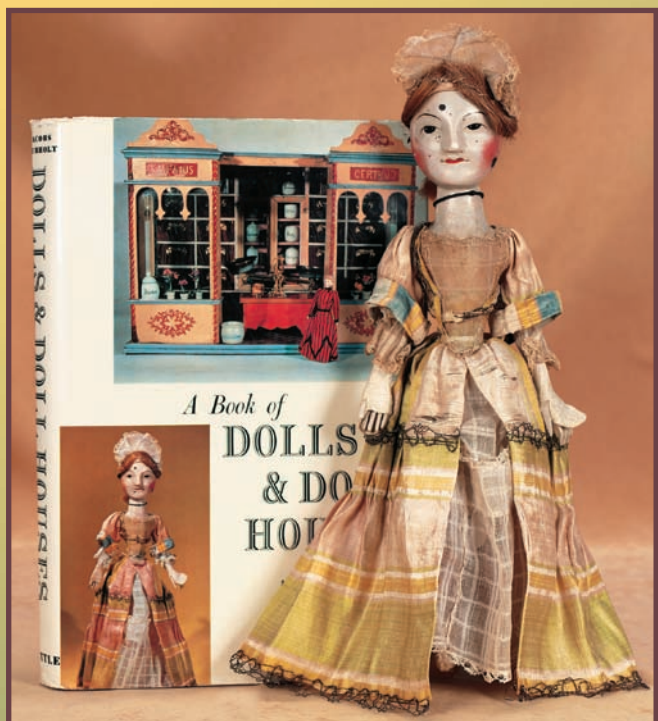
Then, a few months later they told Stuart Holbrook, Theriault's President, about their misadventure, pondering, "Whatever became of the Museum?" Stuart replied, "Well, it's been a secret, but now it can be told. You traveled all that way, but really all you had to do was travel to Las Vegas next May because we will be auctioning the Museum contents at that time in that city".

Whether just to see or whether to bid and buy on one of the exceptional treasures from the Legoland Foundation Museum, collectors from all points of the globe are expected to arrive at The Venetian Hotel in Las Vegas on May 19-21, 2006 when the Museum will be on exhibit and auction. With more than 2500 items for auction, the auction will be fast-paced and non-stop excitement. Many lots contain multiples of dolls and toys. The auction swings from the very rare such as the 23" K\*R 103 character doll and the 1690-era English wooden doll known as "Lady Elton" to the very affordable. "New collectors should not despair that there will be nothing for me," says auctioneer Stuart Holbrook, adding "There are many, many dolls estimated at under \$500 making this a great opportunity not only to see the rarest of the rarest, but for everyone to actually take home a doll."

The Museum has been especially noted for its group of Royal Copenhagen porcelain lady dolls from the mid-19th century. The dolls were first documented by Estrid Faurholt, author of *The Book of Dolls and Dollhouses* (1967) whose collection became the nucleus of the Legoland Museum. Few examples of these dolls are known to exist; the Museum owns six, two with original trousseaux. In addition there are several fine examples of KPM porcelain models and more than 50 other rare model porcelain dolls, each different, with a splendid variety of coiffures and painting, from the 1860-1885 era.



The two volume boxed set of catalogs featuring the Legoland Museum of Antique Dolls, Dollhouses and Toys features the very rare 23" Kammer and Reinhardt 103 model, an early Danish dollhouse depicting a typical village home, and a rare large tin toy ship.



The 1690-era English wooden doll known as "Lady Elton" was featured on the cover of the 1967 *A Book of Dolls and Doll Houses*.



Their maker remains a mystery although the quality of their construction and superb state of preservation is assured. The all-leather dolls in original costume represent Queen Victoria and Prince Albert, circa 1850.



Among the rare paper mache dolls in the collection is this example with original painted necklace, earrings and hair ornaments.



A 14" English poured wax doll in original costume, believed to represent Queen Victoria, is posed in the midst of a collection of antique miniature clocks.

The collection is also notable for its selection of early bisque dolls with sculpted hair; more than 35 are offered, each different, and most with enhancing features such as hair ornaments, decorative bodices or jewelry, or glass eyes. Collectors of early paper mache dolls will not be disappointed at the superb rarities in this category. Other early dolls range from wax dolls in original costumes to an exceptional pair of all-leather hand-stitched dolls, circa 1840, representing the young Queen Victoria and Prince Albert. Wooden dolls, in addition to "Lady Elton" range from whimsical folk art to court dolls. Collectors of traditional bisque dolls will also be delighted as the collection includes classic French bebes from Bru and Jumeau, delightful bisque googlies, German characters from the art reform movement, many all-bisque and miniature dolls, French fashion ladies, dollhouse dolls, all-original child dolls, and even Kathe Kruse and Schoenhut.

The auction also includes a large collection of antique doll clothing and accessories, including dresses, gowns, bonnets, undergarments and shoes. Some costumes will be sold individually, although others will be offered in large groups. "It's a treasure trove for collectors who can never find enough antique clothing for their dolls," declares Florence Theriault, cataloger.

Of special note is the collection of doll-sized miniature furniture, mostly 18th to mid-19th century. These diminutive pieces have become increasingly difficult to find. The work of individual cabinetmakers, each is charmingly and meticulously crafted, and many collectors now seek them as works of art in themselves in addition to their value



The sweet-faced dolls of the C.F. Kling firm of Germany aptly portrayed the Danish child of the late 19th century, and the Museum has a complete collection of their models including this doll, mint in box, with provenance.



Known as "Luise Moltke", the very rare Royal Copenhagen lady owns her original trousseau of five gowns.

as doll accessories. The cabinet pieces include canopy beds, chests of drawers, desks, cupboards, chairs, and even a selection of early miniature clocks.

Smaller yet is the dollhouse furniture. The Friday session includes 350 lots of furnished 19th century dollhouses as well as lots of dollhouse furnishings, accessories, and dollhouse dolls. There is Biedermeier and maple furniture, ormlu decorative accessories, blown glassware, kitchenware, store furnishings, and more, mostly sold in large groups.

The Museum, which was located at Legoland Park in Billund, Denmark, was established by Kirk and Edith Christiansen, founders of LEGO toys. In developing their legendary 20th century toy empire, the couple became naturally interested in the history of dolls and toys. A relationship with the Estrid Faurholt, the early Danish doll collector and researcher, led to their acquisition of her important collection and it was upon this nucleus collection that they built and expanded. The Christiansen collection was housed and exhibited at Legoland Park in Billund for nearly forty years. As more than one collector noted over those decades, "Children come here for the rides and fun, but the grown-up kids, the collectors, realize that the real treasure of this park is in the Museum. Before I came here, I never imagined the antique rarities that I would find." The collector added whimsically, "And not a single Lego toy in the collection!"

The auction, to be conducted by Theriault's of Annapolis, Maryland takes place at The Venetian Hotel in Las Vegas. The Theriault's firm, now in its 36th year, was chosen by the

LEGO Foundation for the auction because of its international reputation for marketing, subject knowledge and "a nearly reverential respect for the history of a collection", according to Kirsten Stadelhofer, longtime curator of the collection, who will be in attendance at the auction. The auction is the first important European museum of antique dolls and toys to be sold in America.



The collection features a large number of all-bisque, miniature and rare dollhouse dolls, here shown with a fine early Maerklin doll carriage.



A dainty 11" size, the Royal Copenhagen doll has original porcelain bare feet, and owns a well-preserved original trousseau.



Less than 100 are known to exist of the remarkable doll by the French sculptor Albert Marque, circa 1915. This model is fully signed, including the red script number "3".

The Friday session, May 19, with preview at 1PM and auction beginning at 3PM will feature dollhouses and dollhouse furnishings, although many dolls and accessories will also be included. The Saturday and Sunday sessions, with preview at 9 AM, highlights antique dolls, accessories, doll-sized furniture and a superb collection of antique toys on each day.

The collection is preserved in a 350 page two-volume boxed catalog with photographs, descriptions and presale estimates of each of the objects, available for \$129 including priority postage and post-sale prices. Although attendance is encouraged at the auction, collectors can also absentee bid in a number of ways: written absentee bids, telephone bidding, internet pre-bid, or live internet bidding at the time of the auction. The live internet bidding features an audio/video feed allowing bidders the sense of actually being at the auction although sitting in the comfort of their own home. For further information or to order a catalog call 800-638-0422 or query [info@theriaults.com](mailto:info@theriaults.com). The complete auction can be viewed at [www.theriaults.com](http://www.theriaults.com), click on the Proxibid button.



Left: The Museum includes an exceptional group of dolls of paper mache and china from the first half of the 19th century including this unique model with attached human hair looped curls.



Right: The collection contains a fine collection of early model Simon and Halbig dolls, some such as this with sculpted hair and glass eyes.

Superbly furnished doll houses are offered from the auction, in addition to many lots of furniture sold separately.

